



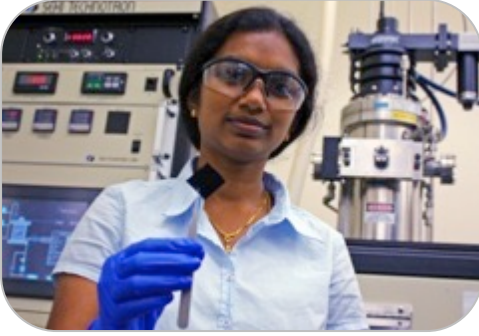
Resolutions of Appreciation

Sam and Marsha Allen Purdue Research Foundation	\$20M
Mark and Maureen Miller College of Health and Human Sciences	\$14M
Anonymous College of Engineering and Purdue Polytechnic Institute	\$2.7M
Charles Richter and Dion Messer College of Science	\$1M
Michael and Rita Boehlje College of Agriculture	Undisclosed
Ryan and Meredith Cohlepp College of Pharmacy	Undisclosed
Bob and Sharon Schafer School of Management and Krannert Graduate School of Management	Undisclosed
Yang Hu Tong (d. 2014) and Grace Kwoh Tong (d. unknown) School of Mechanical Engineering	Undisclosed
Anthony "Tony" Yost College of Pharmacy and Purdue Athletics	Undisclosed

Winter Recess Extension: Proposed Schedule

DECEMBER 2022 – JANUARY 2023						
SUNDAY	MONDAY	TUESDAY	WEDNESDAY	THURSDAY	FRIDAY	SATURDAY
18	19	20	21	22	23 Scheduled Holiday	24 WEEKEND
25 WEEKEND	26 Scheduled Holiday	27 Proposed Holiday	28 Proposed Holiday	29 Proposed Holiday	30 Scheduled Holiday	31 WEEKEND
1 WEEKEND	2 Scheduled Holiday	3	4	5	6	7

Board of Trustees Meeting Topics



FEB: Strategic Initiative Update



APRIL: Affordability



JUNE: Fundraising



AUG: End of Year Report



OCT:
Enrollment & Graduation



DEC: Institutional Reputation

DISCOVERY PARK DISTRICT AT PURDUE



SCHWEITZER ENGINEERING
LABORATORIES



3rd & WEST APARTMENTS
Proposed Site



PURDUE TECHNOLOGY
CENTER AEROSPACE
(ROLLS-ROYCE)



CONVERGENCE
CENTER

BIRCK
NANOTECHNOLOGY
CENTER

STATE STREET

SOURCE ALUMNI CONDOS
Potential Site

CONTINUUM
APARTMENTS

BINDLEY
BIOSCIENCE CENTER

PROVENANCE
RESIDENTIAL VILLAGE

FLEX LAB

AIRPORT ROAD

AGE RESTRICTED HOUSING
Potential Site

MEDICAL FACILITY
Potential Site



HYPERSONIC GROUND
TEST CENTER (HGTC)
Proposed Site

HYPERSONICS AND APPLIED
RESEARCH FACILITY (HARF)



SAAB

MAURICE J.
ZUCROW LABS

PURDUE UAS RESEARCH
AND TEST FACILITY

COMPLETED PROJECTS

POTENTIAL SITES

PURDUE UNIVERSITY AIRPORT

- **\$120 million State Street
Redevelopment Project**
- **Discovery Park District at Purdue:
\$1 billion, 30-year initiative**
- **Completed & current projects:**
 - Convergence Center
 - Continuum apartments
 - Provenance: Single-family homes,
apartments, and townhomes
 - Saab
 - SEL
 - Rolls-Royce expansion



■ Current Convergence tenants:

- Wabash National
- Beck's Hybrids
- NineTwelve Institute (Living Lab)
- Bayer
- Carr Workplaces
 - Clients: Zorion Medical, Identify Sensors, GE, Subu LLC, JLG, Purdue DIAL, Tilson/SQF, JC Hart

■ Future tenants

- CINDAS LLC (Microelectronics & Aerospace Data Science company with Purdue affiliation)



Connected Community:

- **5G Testing Center**

focuses on emerging technologies such as advanced manufacturing, hypersonics and microelectronics

- **The Nation's first Neutral Host Technology Infrastructure**

partnerships with Tilson, SBA Communications, Indiana 5G Zone



Technology Leaders Advisory Board (TLAB)

Members: AT&T, Celona, Cisco, Dell, Ericsson, Intel, SBA Communications and Tilson



Sales ahead of projected pace

Single family: 18 homes completed

Townhomes: 4 townhomes currently under construction

Apartments: Total 142 units - First 4 buildings fully leased

Phase 2:

- **Single family & townhomes in 2023**
- **Apartments will be 108 units - 48 will be released by end of 2022**



Hypersonics and Applied Research Facility

- 65,000-square feet
- Research labs & Mach 8 wind tunnels
- March 2023 occupancy date



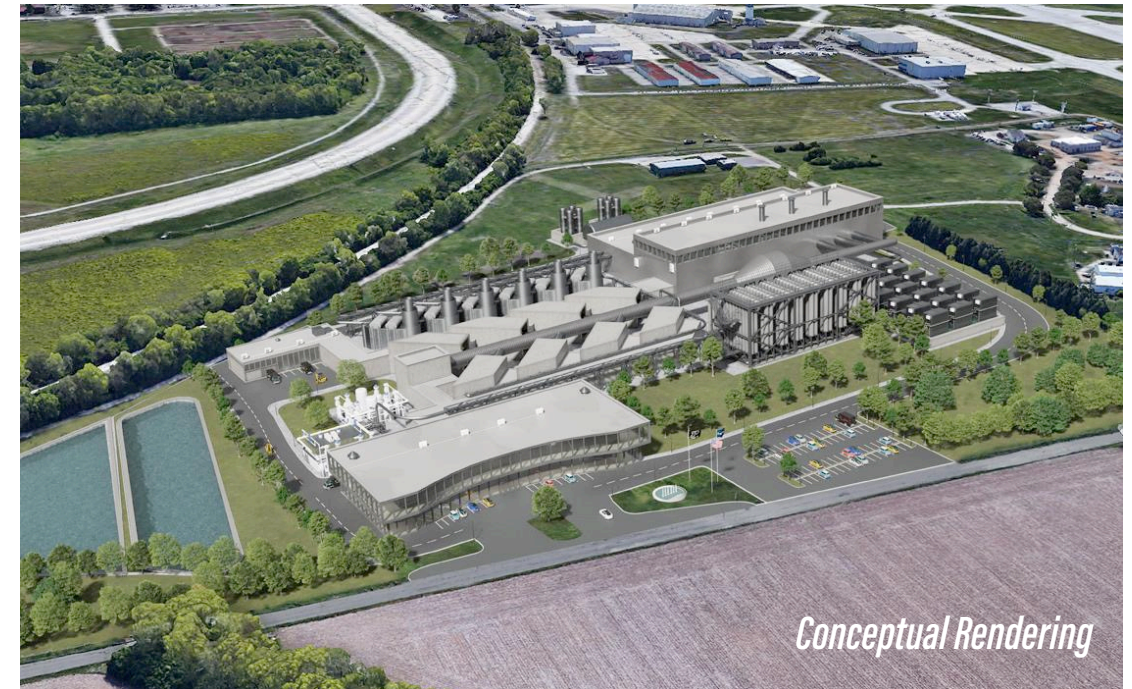
Rolls-Royce

- Two Expansions at Purdue Technology Center Aerospace
- High Altitude Testing Facility
- The Utility Building (TUB)



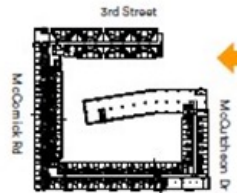
NEW UPCOMING PROJECTS:

- 3RD & WEST apartments for young professionals
- Source alumni condos (*in development*)
- Age Restricted Housing (*in development*)
- Medical facilities
- Rolls-Royce expansion and new builds
- Work From Purdue - TMap program with a goal to move 100 new people to the area in the 2022 calendar year



3RD & WEST APARTMENTS

Conceptual Rendering View from McCutcheon Dr



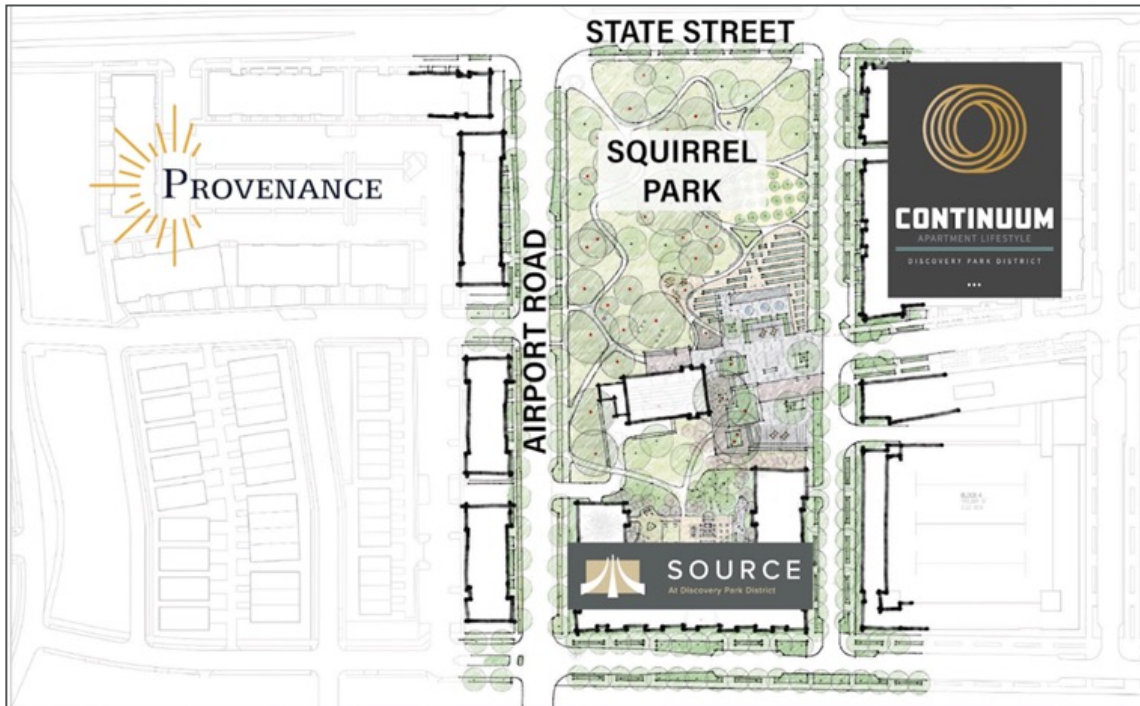
Conceptual Rendering View from SW



New Projects- renderings

SOURCE ALUMNI CONDOS

- 30 Total verbal commitments, exceeding commitment goal



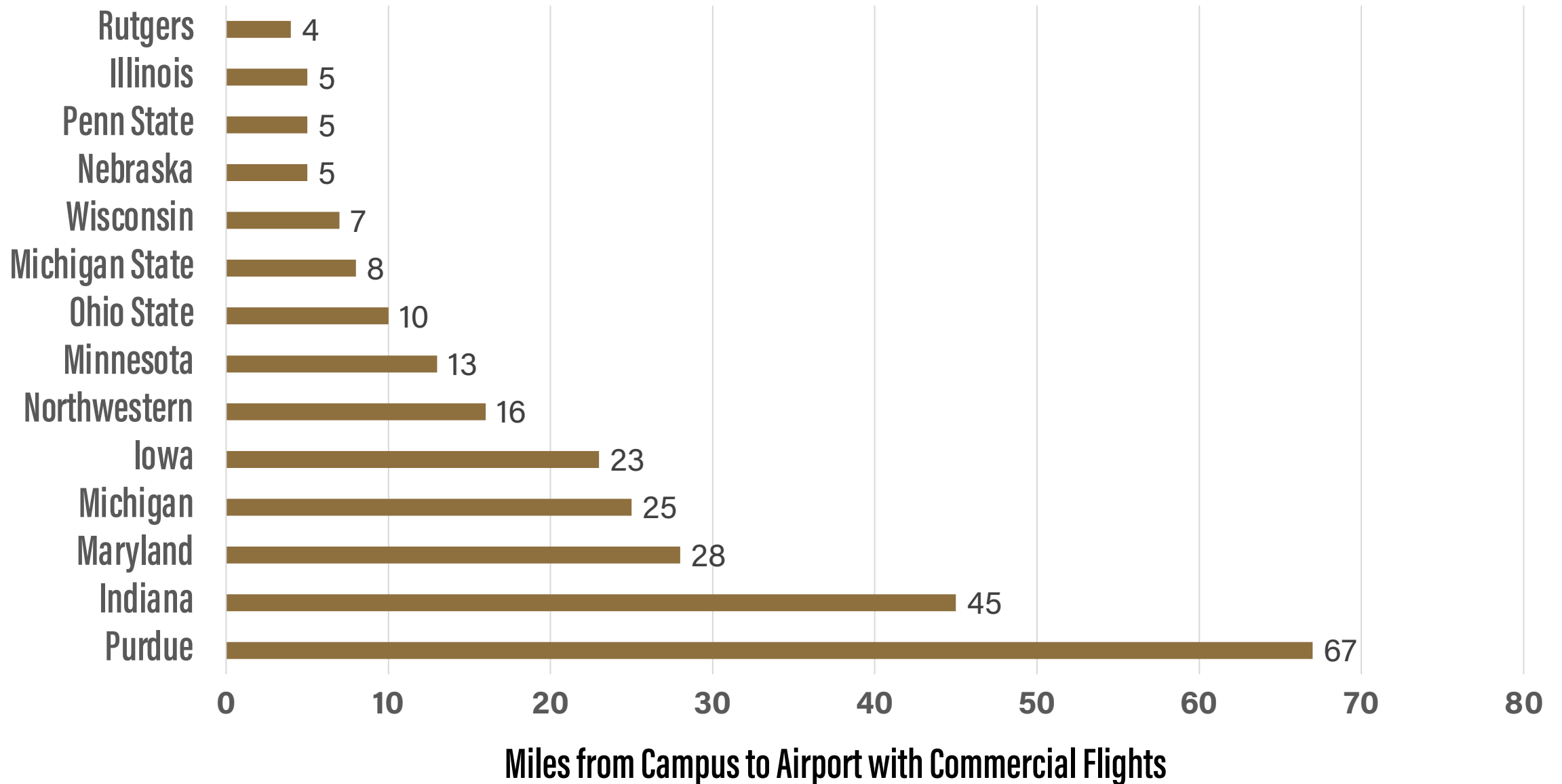
- A first-of-its-kind in the U.S. facility to test hypersonic technologies.
- Will be administered by a nonprofit consortium of national defense industry partners.
- Rolls-Royce is the first member.
- Other industry partners and government entities are being recruited.



- **Inari Greenhouse Purchase and Expansion- 102,000 SF**
 - investing \$22.3 million to upgrade KPTC lab space
 - Adding 17,500 SF greenhouse space
- **Flir/Teledyne relocation to Ross Enterprise Center**
39,724 SF (Purdue vacated space)
- **Wabash National leasing 25,912 SF at KPTC**
(Purdue vacated space)
- **Purdue LTAP committing to 7,324 SF at KPTC**
Establishing “Connected Classroom”



Big Ten Universities Ranked by Distance to Commercial Airport



- Small Community Air Service Development Program (SCASDP) grants went to airports that lost commercial service during COVID.
- READI Funds: \$7M in matching funds from IEDC but ARPA ties may limit uses
- Kicked off Terminal Design Study this year to generate accurate cost and design of terminal with the ability to handle commercial. Study to be completed in May 2022.
- Airport Improvement Program (AIP) from FAA/DOT appears to be best path towards financing a terminal project.
 - Potential for \$20.5M in funding from FAA
 - Cannot be used on revenue producing aspects (e.g. ticket counters)
 - Working towards a 2024 project with funding that's 90% federal, 5% state, and 5% local (Purdue).

